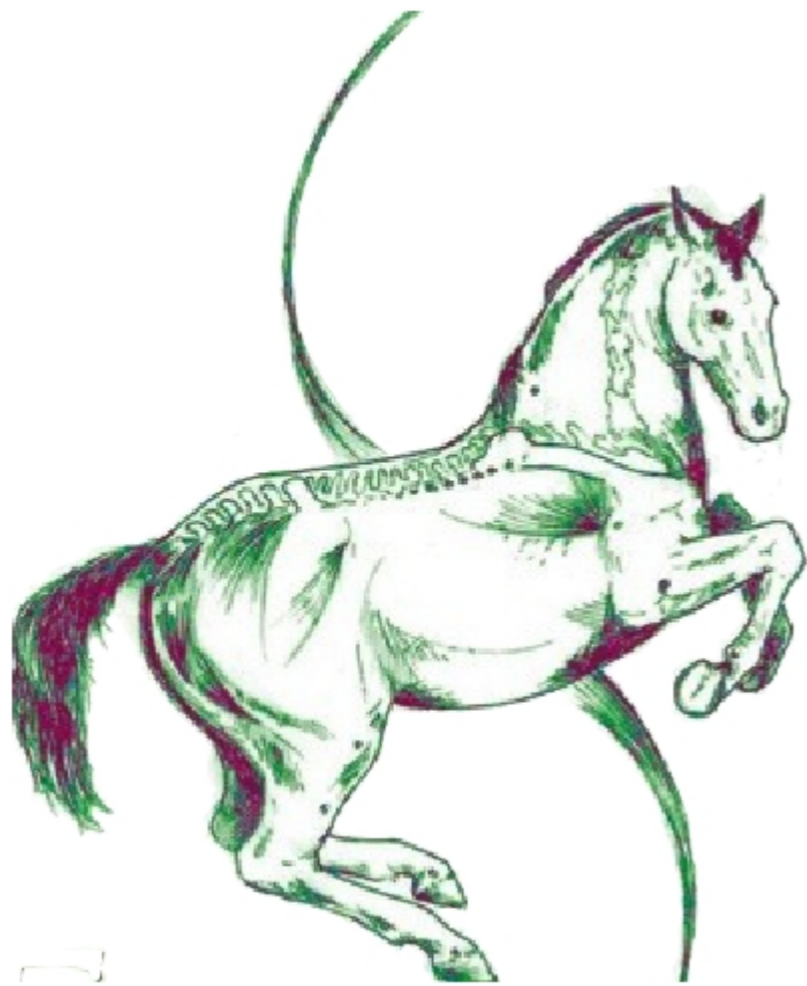
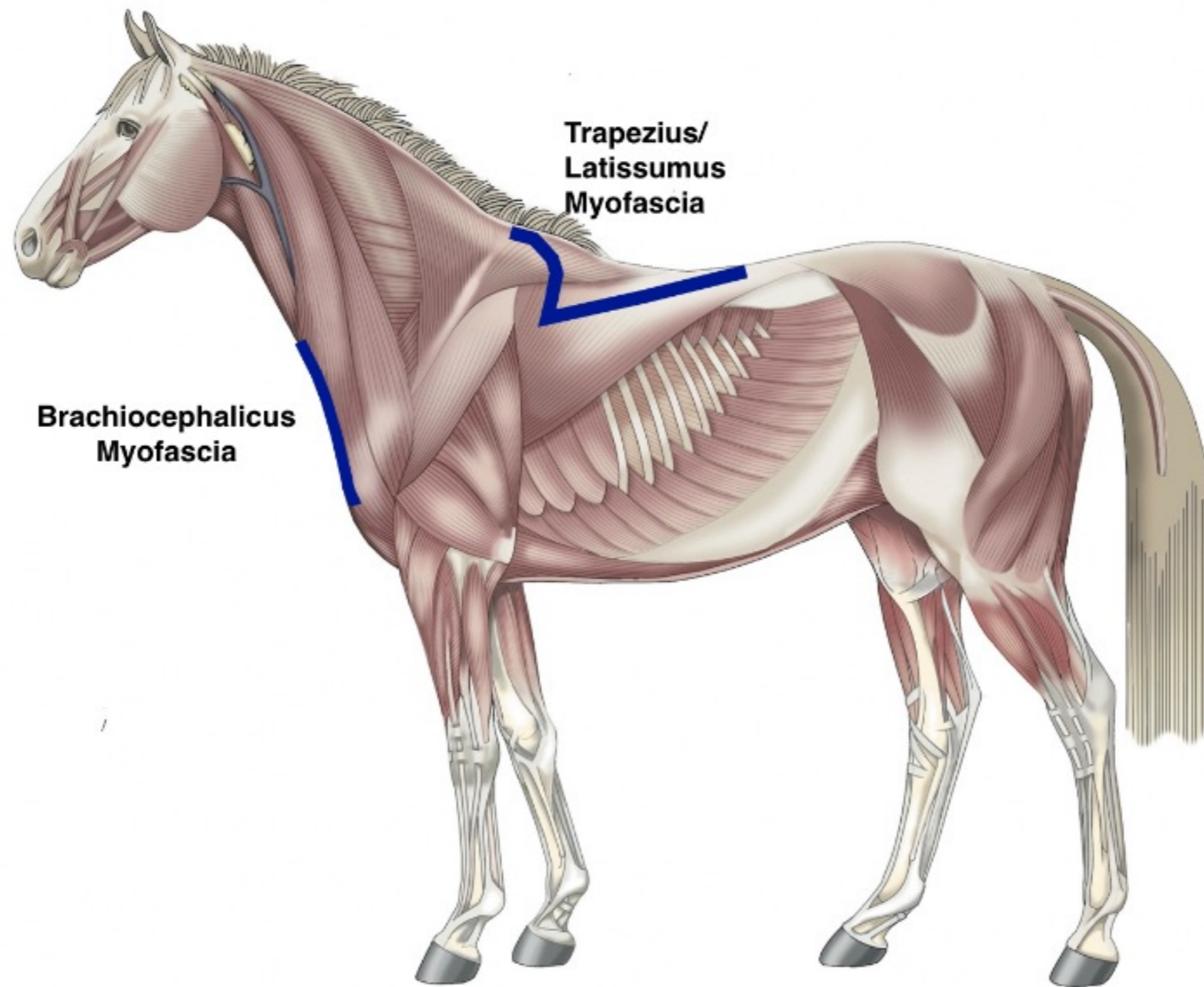


Diagnostic Points For Equine Gastrointestinal Ulcers



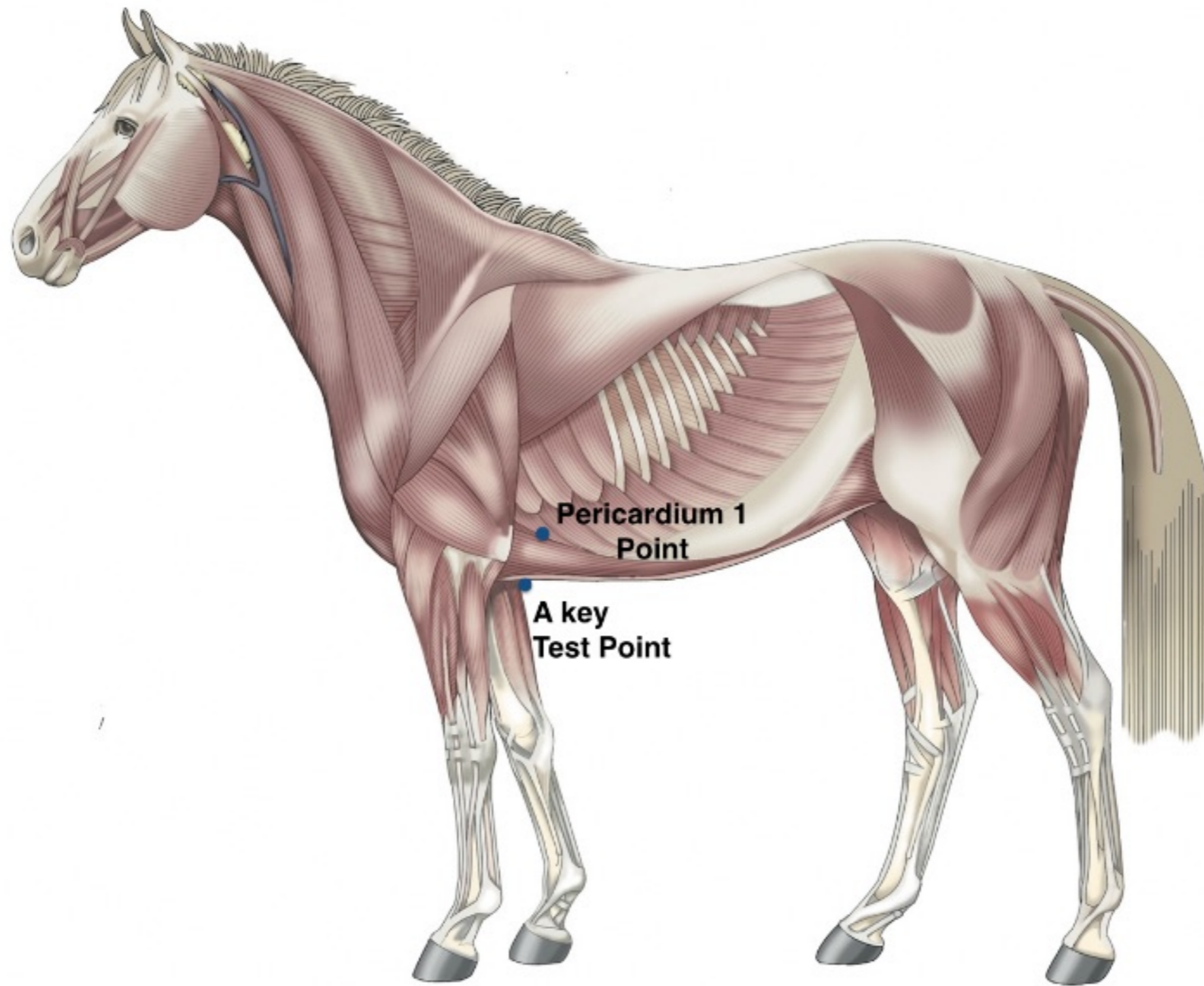
Kerry Ridgway, DVM
Equine Therapeutics Options

www.DrKerryRidgway.com



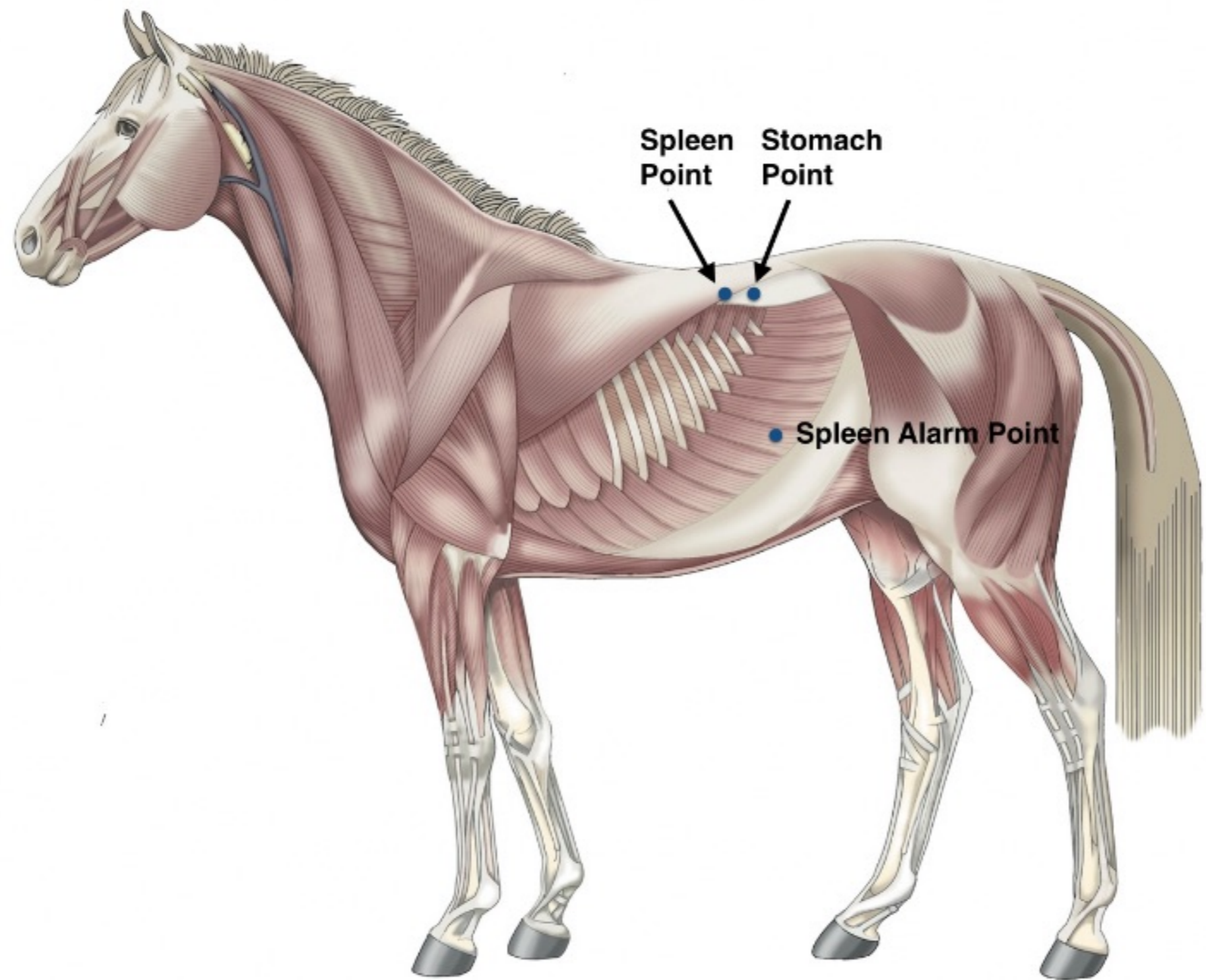
**Trapezius/
Latissimus
Myofascia**

**Brachiocephalicus
Myofascia**



**Pericardium 1
Point**

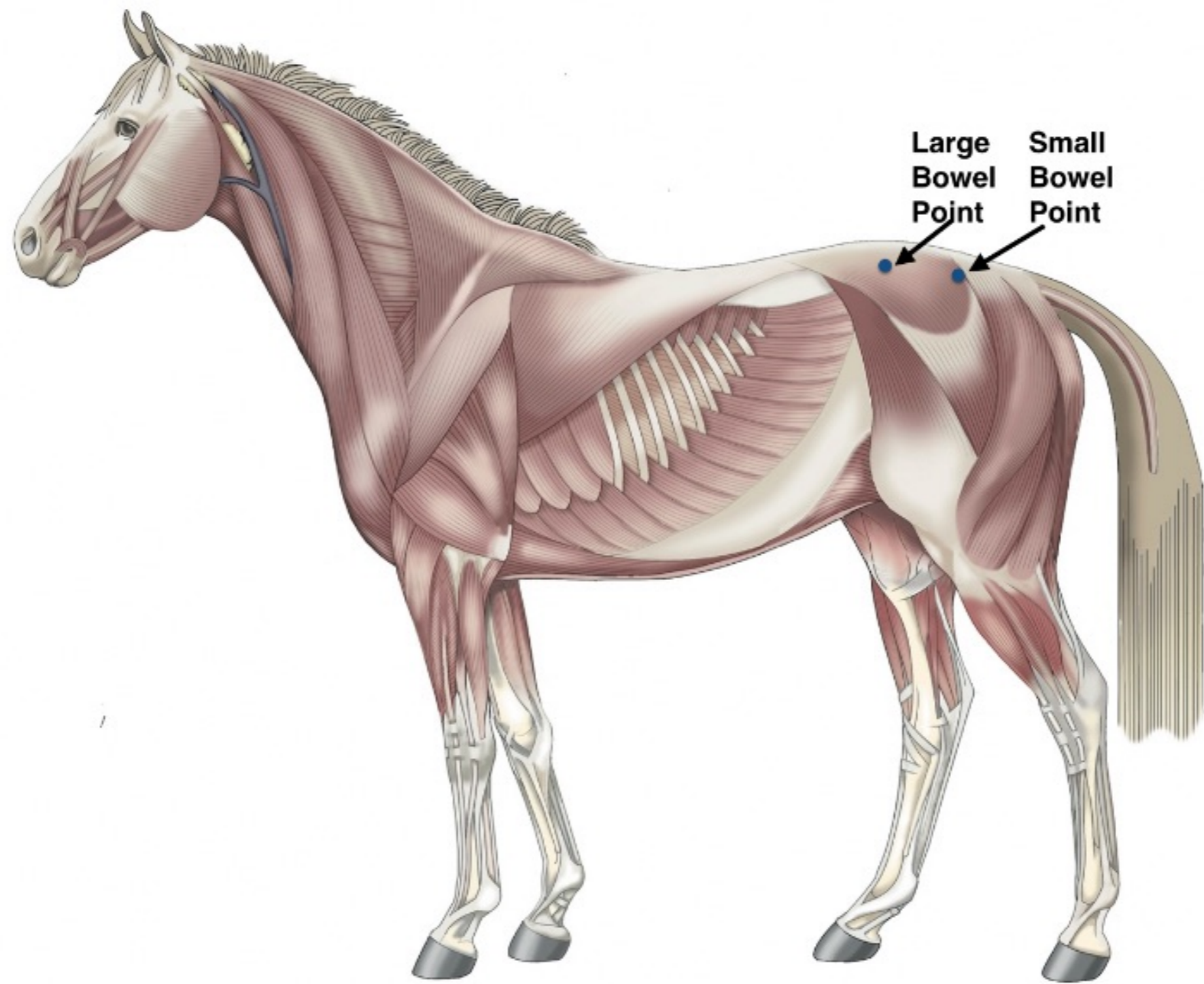
**A key
Test Point**



Spleen
Point

Stomach
Point

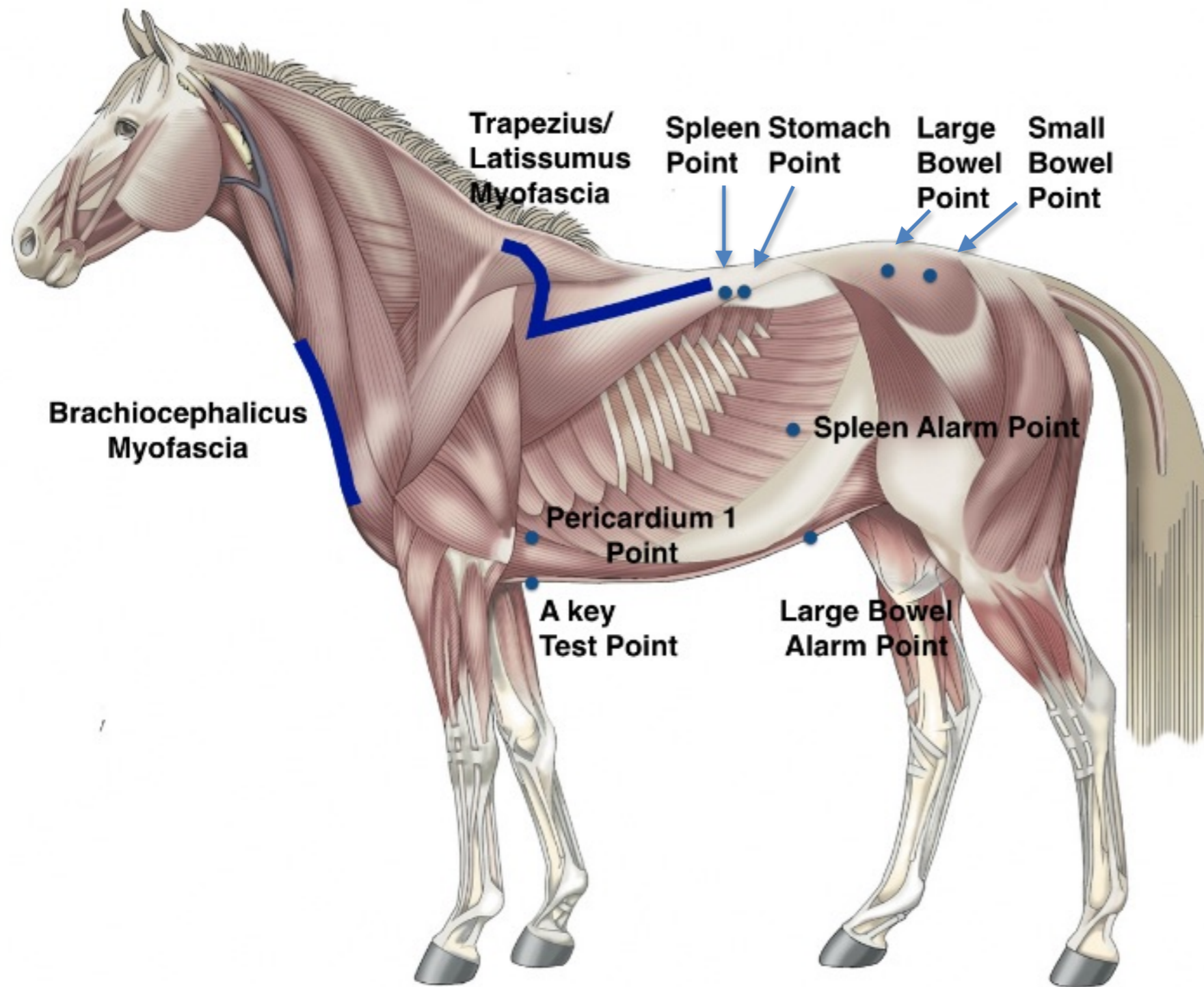
• Spleen Alarm Point



Large
Bowel
Point

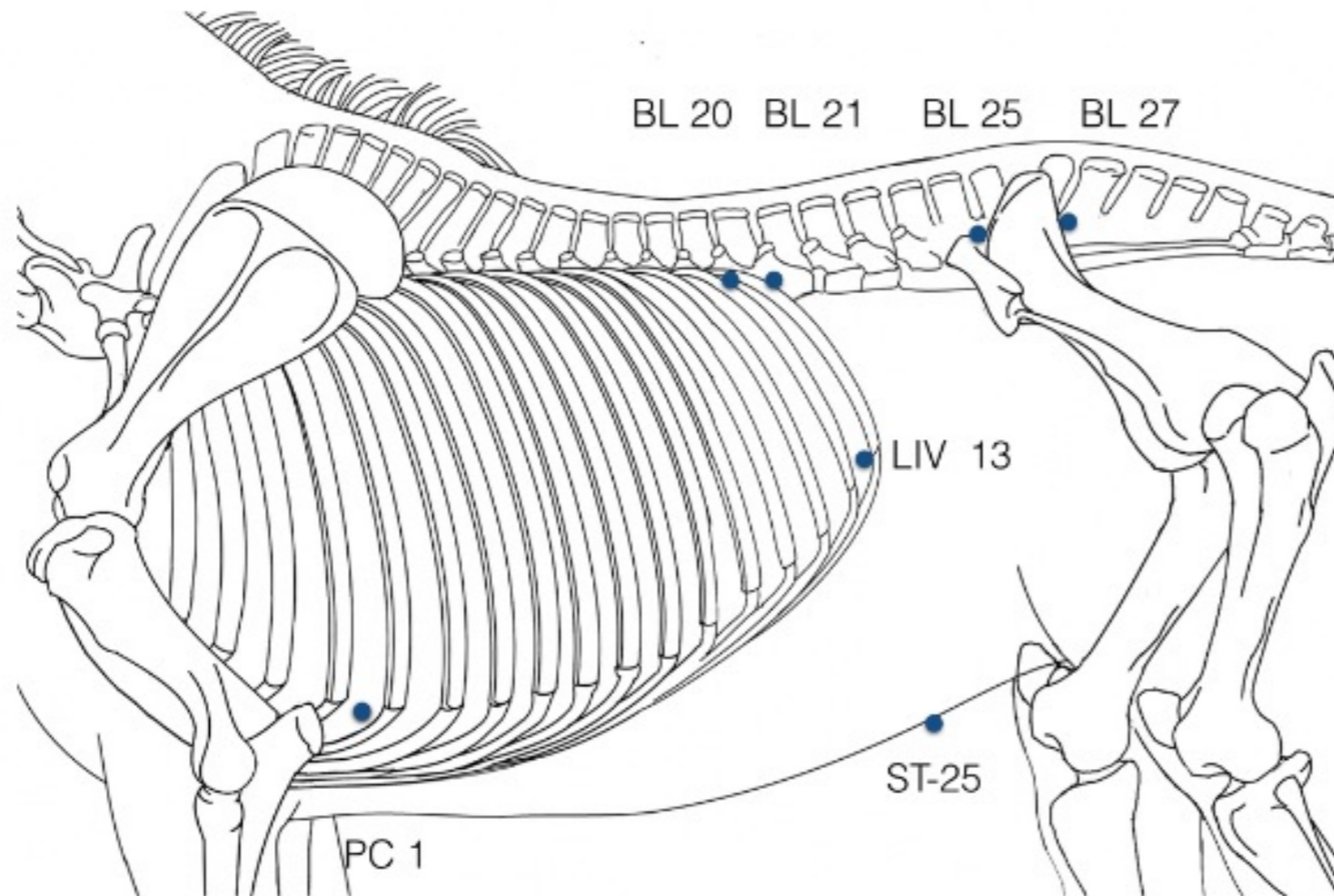
Small
Bowel
Point

Dr Ridgway's Diagnostic Points



- BL 20 - Spleen Association Point
- BL 21 - Stomach Association Point
- BL 25 - Large Intestine Association Point
- BL 27 - Small Intestine Association Point
- LIV. 13 Spleen Alarm Point
- ST 25 - Large Intestine Alarm Point
- PC 1 - Yin partner of the Yang Small Intestine

Dr Ridgway's Diagnostic Points



- BL 20 - Spleen Association Point
- BL 21 - Stomach Association Point
- BL 25 - Large Intestine Association Point
- BL 27 - Small Intestine Association Point
- LIV. 13 Spleen Alarm Point
- ST 25 - Large Intestine Alarm Point
- PC 1 - Yin partner of the Yang Small Intestine